



DAVID COLEMAN MP  
Federal Member for Banks

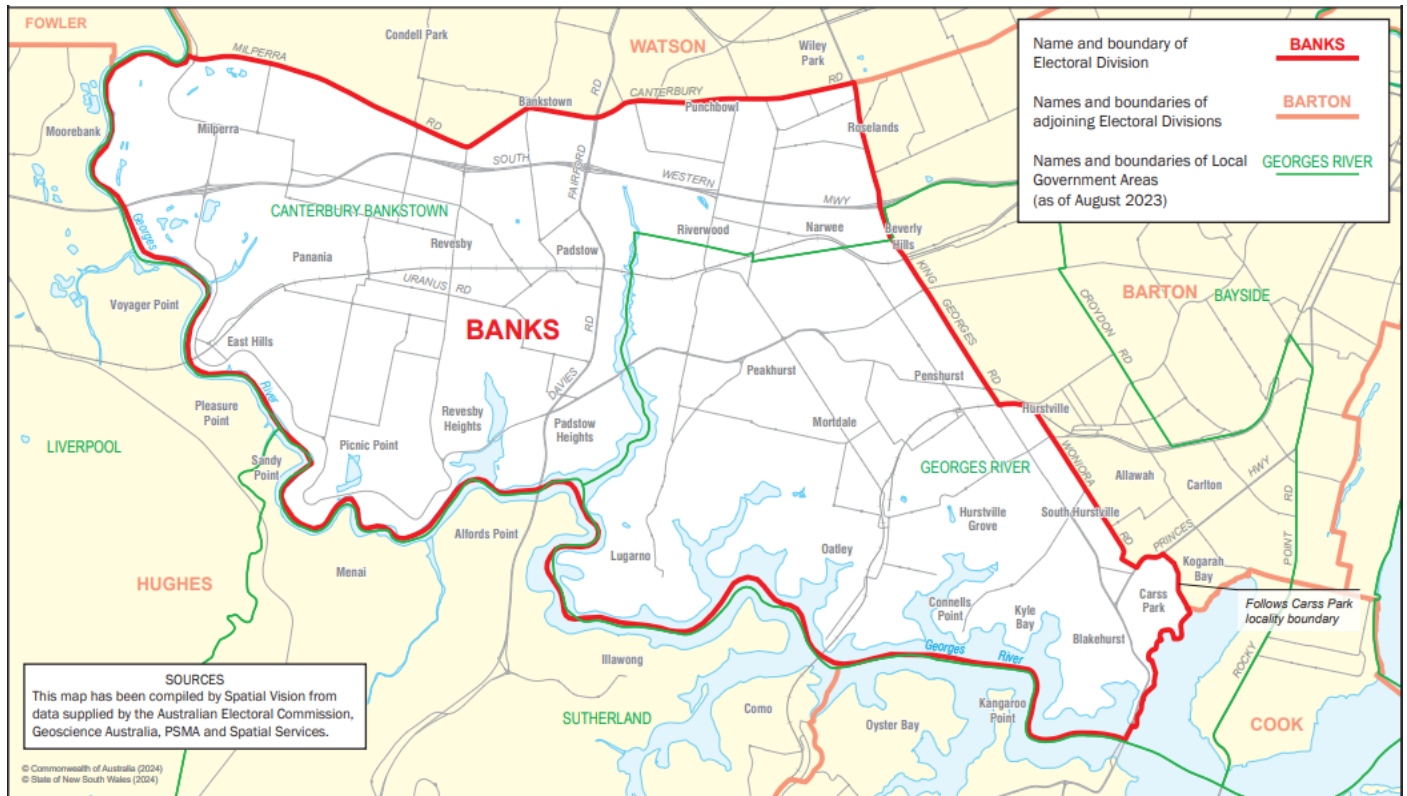


# COMMUNITY HALLS GUIDE



6th Edition  
2024

# ABOUT THE BANKS ELECTORATE



The electorate of Banks includes much of the St George district and parts of the Bankstown and Canterbury areas. The following suburbs are in the electorate: Blakehurst, Carss Park, Connells Point, East Hills, Hurstville, Hurstville Grove, South Hurstville, Kyle Bay, Lugarno, Milperra, Mortdale, Narwee, Oatley, Padstow Heights, Panania, Peakhurst, Peakhurst Heights, Penshurst, Picnic Point, Revesby Heights, Roselands, Riverwood and parts of Beverly Hills, Padstow, Punchbowl and Revesby.

Information within this Guide was up to date at the time of printing.

Please note that information is subject to change.

# FOREWORD

Welcome to the Banks *Community Hall Guide* 2024.

I launched this Guide in 2015 to assist local organisations in finding information regarding local community halls.

Community halls are an important resource. They provide meeting spaces for many local groups, however it is not always easy to find information about the halls that are available for hire.

We have compiled this Guide to help make it easier for local groups and families to find a suitable hall for their next event or meeting.

I hope this Guide will assist you next time you are looking to make use of a local hall.

Please do not hesitate to get in touch if there are any matters you'd like to discuss with me.



**David Coleman MP**  
**Federal Member for Banks**

## **Feedback for this Guide**

If you would like to suggest any additions to this Guide, or raise any other issue, please email [david.coleman.mp@aph.gov.au](mailto:david.coleman.mp@aph.gov.au) or call 9771 3400.

# CONTENTS

<b>BEVERLY HILLS</b>	<b>7</b>
Beverly Hills Public School	
Beverly Hills Community Hall	
<b>BLAKEHURST</b>	<b>8</b>
Blakehurst High School	
Blakehurst Primary School	
<b>CARSS PARK</b>	<b>9</b>
Carss Park Lifesaving Hall	
Carss Park Straw Bale Shed	
<b>CONNELLS POINT</b>	<b>10</b>
Connells Point Primary School	
<b>EAST HILLS</b>	<b>10</b>
East Hills Boys High School	
<b>HURSTVILLE</b>	<b>11</b>
Georges River College Hurstville Boys Campus	
Hurstville Aquatic Centre –Johnny Warren Stadium	
Hurstville Senior Citizens Centre	<b>12</b>
Hurstville Oval Blackshaw Gould Community Pavilion Room	<b>13</b>
Hurstville Civic Theatre	<b>14</b>
Marana Auditorium	
<b>MILPERRA</b>	<b>15</b>
Milperra Public School	
<b>MORTDALE</b>	<b>16</b>
Mortdale Village Hall	



# CONTENTS

## **MORTDALE**

Party Splendor Creative Space	16
Mortdale Jubilee Community Centre	17
Mortdale RSL Club	18

## **OATLEY**

2nd Mortdale Scout Hall	19
Oatley Community Hall	

## **PADSTOW**

Padstow Bowling Club	20
Padstow Park Public School	
Padstow RSL Club	
Padstow Senior Citizens' Centre	21

## **PANANIA**

Panania Anglican Church	22
2nd Panania Scout Hall	23
Panania Senior Citizens' Centre	

## **PEAKHURST**

Peakhurst Public School	24
Peakhurst South Public School	

## **PENSHURST**

Penshurst Anglican Church Hall	25
--------------------------------	----

## **PICNIC POINT**

Picnic Point Scout Hall	26
-------------------------	----

## **PUNCHBOWL**

Punchbowl Community Centre	27
Moxon Sports Club	

# CONTENTS

<b>REVESBY</b>	<b>28</b>
Revesby Greens	
Revesby Workers Club Community Hall (MacArthur Room)	
YMCA REVESBY	
Endeavour Hall	<b>29</b>
Sir Joseph Banks High School	
Revesby Community Centre	<b>30</b>
<b>RIVERWOOD</b>	<b>31</b>
Hannans Road Public School	
Riverwood Public School	
Thurlow Street Community Hub	
Riverwood Community Centre	<b>32</b>
Riverwood Community Hub	<b>33</b>
Morris Iemma Indoor Sports Centre	<b>34</b>
<b>SOUTH HURSTVILLE</b>	<b>35</b>
St Marks Church Hall	

# BEVERLY HILLS

## Beverly Hills Public School

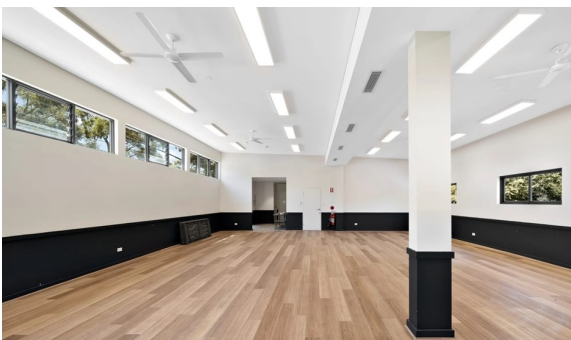
*Corner of Stoney Creek Road & King Georges Road, Beverly Hills*



<b>Capacity</b>	450 people
<b>Availability</b>	Upon request
<b>Cost</b>	Price on application
<b>Contact</b>	9580 5074
<b>Facilities</b>	<ul style="list-style-type: none"><li>• Stage</li><li>• Toilets</li></ul>

## Beverly Hills Community Hall

*49 Cahill Street, Beverly Hills*



<b>Capacity</b>	120 seated
<b>Availability</b>	Upon request
<b>Cost</b>	Price on application
<b>Contact</b>	E: <a href="mailto:ahaunited2020@gmail.com">ahaunited2020@gmail.com</a>
<b>Facilities</b>	<ul style="list-style-type: none"><li>• Toilets (including disabled access)</li><li>• Kitchen</li><li>• Tables and Chairs available</li><li>• Large Paved outdoor area</li></ul>

# BLAKEHURST

## Blakehurst High School

*270A Woniora Road, Blakehurst*



<b>Capacity</b>	Upon Request
<b>Availability</b>	Upon request
<b>Cost</b>	Price on application
<b>Contact</b>	9546 3281 E:blakehurst_h.school@det.nsw.edu.au
<b>Facilities</b>	<ul style="list-style-type: none"><li>• Stage</li><li>• Toilets</li></ul>

## Blakehurst Primary School

*270A Woniora Road, Blakehurst*



<b>Capacity</b>	Upon Request
<b>Availability</b>	Upon request
<b>Cost</b>	Price on application
<b>Contact</b>	9546 1555 E:blakehurst_p.school@det.nsw.edu.au
<b>Facilities</b>	<ul style="list-style-type: none"><li>• Stage</li><li>• Toilets</li></ul>

# CARSS PARK

## Carss Park Lifesaving Hall

103 Carwar Ave, Carss Park



<b>Capacity</b>	60 people
<b>Availability</b>	8am– 11pm
<b>Cost</b>	Price on application
<b>Contact</b>	93306400 option 2 E:entertainment@georgesriver.nsw.gov.au
<b>Facilities</b>	<ul style="list-style-type: none"> <li>• Kitchen Facilities</li> <li>• Toilets</li> <li>• Fenced outdoor play area</li> </ul>

## Carss Park Straw Bale Shed

Carss Park Bush. Carwar Ave Carss Park



<b>Capacity</b>	10 People
<b>Availability</b>	Mon, Tues, Thurs, Friday 9:00am- 4:00pm
<b>Cost</b>	Price on application
<b>Contact</b>	9330 6400 option 2 E: entertainment@georgesriver.nsw.gov.au
<b>Facilities</b>	<ul style="list-style-type: none"> <li>• 1 table and 8 chairs</li> </ul>



# CONNELLS POINT

## Connells Point Primary School

*2 Riverview Ave, Connells Point*



<b>Capacity</b>	Please contact school
<b>Availability</b>	Upon request
<b>Cost</b>	\$45 per hour
<b>Contact</b>	9546 1730 E: connellspt_p.school@det.nsw.edu.au
<b>Facilities</b>	<ul style="list-style-type: none"> <li>• Kitchen Facilities</li> <li>• Toilets</li> <li>• Chairs and Tables</li> </ul>

# EAST HILLS

## East Hills Boys High School

*Lucas Road, East Hills*



<b>Capacity</b>	350 people
<b>Availability</b>	Weekends
<b>Cost</b>	Price on request Minimum 8 hour hire
<b>Contact</b>	9773 7806
<b>Facilities</b>	<ul style="list-style-type: none"> <li>• Stage and chairs</li> <li>• Toilets</li> <li>• AV gear (PA and projector)</li> <li>• Basic stage lighting</li> </ul>



# HURSTVILLE

## Georges River College Hurstville Boys Campus School

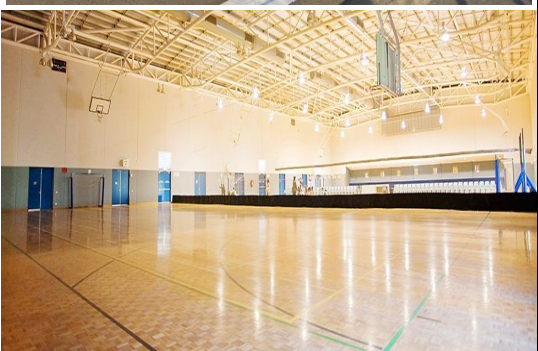
*Kenwyn Street, Hurstville*



<b>Capacity</b>	520 people
<b>Availability</b>	Upon request
<b>Cost</b>	Price on application
<b>Contact</b>	9587 3199
<b>Facilities</b>	<ul style="list-style-type: none"> <li>• Change Room</li> <li>• Toilets</li> <li>• Showers (no hot water)</li> <li>• Disability access</li> <li>• Presentation capabilities</li> </ul>

## Hurstville Aquatic Centre - Johnny Warren Stadium

*Corner of King Georges and Forest Road, Hurstville*



<b>Capacity</b>	Seated, 50-60 people
<b>Availability</b>	Please refer to Aquatic Centre's opening hours
<b>Cost</b>	Full court - \$81.60/hour per court Half court - \$40.80/hour Badminton court - \$30.60/hour per court
<b>Contact</b>	9585 9600 or <a href="mailto:stadium@hurstvilleaquatic.com.au">stadium@hurstvilleaquatic.com.au</a>
<b>Facilities</b>	<ul style="list-style-type: none"> <li>• 3 courts with dividing nets (suitable for soccer, basketball, volleyball, hockey, badminton and more)</li> <li>• Toilets</li> <li>• Wheelchair Access</li> <li>• Multimedia available</li> <li>• Catering Options</li> <li>• Tables</li> </ul>
<b>Website</b>	<a href="http://www.hurstvilleaquatic.com.au/fees/">www.hurstvilleaquatic.com.au/fees/</a>

# HURSTVILLE

## Hurstville Senior Citizens Centre

91 Queens Road, Hurstville



<b>Capacity</b>	150 - 200 people
<b>Availability</b>	Monday to Friday: 7:00am - midnight Saturday and Sunday: 7:00am - 10.30pm
<b>Cost</b>	<u>Casual Bookings</u>  Monday to Friday: \$60/hour Weekends & Public Holidays: \$73/hour  <u>Regular Bookings</u>  Monday to Friday: \$53/hour  Sunday: \$67/hour  No regular Saturday bookings
<b>Contact</b>	Georges River Council: 9330 6400 or entertainment@georgesriver.nsw.gov.au
<b>Facilities</b>	<ul style="list-style-type: none"><li>• Toilets</li><li>• Wheelchair Access</li><li>• Multimedia available</li><li>• Catering Options</li><li>• Kitchenette</li><li>• 30 x tables and 100 x chairs</li><li>• PA System</li></ul>
<b>Website</b>	<a href="http://www.georgesriver.nsw.gov.au/">www.georgesriver.nsw.gov.au/</a>

# HURSTVILLE

## Hurstville Oval Blackshaw Gould Community Pavilion Room

30 Dora Street, Hurstville



<b>Capacity</b>	80 people
<b>Availability</b>	Monday to Friday: 7:00am - 9:00pm Saturday and Sunday 7am– 10:30pm
<b>Cost</b>	<u>Casual Bookings</u>  Monday to Friday: \$70/hour Weekends & Public Holidays: \$76/hour  <u>Regular Bookings</u>  Monday to Friday: \$56/hour  No regular Friday night or weekend bookings
<b>Contact</b>	Georges River Council: 9330 6400 or entertainment@georgesriver.nsw.gov.au
<b>Facilities</b>	<ul style="list-style-type: none"><li>• Toilets</li><li>• Kitchenette (cool room downstairs available)</li></ul>
<b>Website</b>	<a href="http://www.georgesriver.nsw.gov.au/">www.georgesriver.nsw.gov.au/</a>

# HURSTVILLE

## Civic Theatre

16 MacMahon Street, Hurstville



<b>Capacity</b>	200 people
<b>Availability</b>	All week 7:00am - midnight
<b>Cost</b>	Monday to Friday: \$200/hour (includes technical officer) Saturday, Sunday and Public Holidays: \$230/hour (includes technical officer)
<b>Contact</b>	Georges River Council: 9330 6400 or <a href="mailto:entertainment@georgesriver.nsw.gov.au">entertainment@georgesriver.nsw.gov.au</a>
<b>Facilities</b>	<ul style="list-style-type: none"> <li>• 10.5 metre stage</li> <li>• Data projector</li> <li>• Digital laser projector</li> <li>• Multi-purpose</li> </ul>
<b>Website</b>	<a href="http://www.georgesriver.nsw.gov.au">www.georgesriver.nsw.gov.au</a>

## Marana Auditorium

MacMahon Street, Hurstville



<b>Capacity</b>	920 people
<b>Availability</b>	All week 7:00am - midnight
<b>Cost</b>	Monday to Friday: \$285/hour (min 3 hours, includes technical officer) Saturday, Sunday and Public Holidays: \$390/hour (min 3 hours, includes technical officer) Commercial Kitchen Hire: \$155/hour (min 3 hours)
<b>Contact</b>	Georges River Council: 9330 6400 or <a href="mailto:entertainment@georgesriver.nsw.gov.au">entertainment@georgesriver.nsw.gov.au</a>
<b>Facilities</b>	<ul style="list-style-type: none"> <li>• Stage equipment</li> <li>• Toilets</li> <li>• Production equipment</li> <li>• Projector</li> </ul>
<b>Website</b>	<a href="http://www.georgesriver.nsw.gov.au">www.georgesriver.nsw.gov.au</a>



# MILPERRA

## Milperra Public School Hall

*Poziers Ave, Milperra*



<b>Capacity</b>	245 sqm
<b>Availability</b>	Thursday evenings and Saturday mornings only
<b>Cost</b>	\$40/ hour
<b>Contact</b>	9773 8112 milperra-p.schools@det.nsw.edu.au
<b>Facilities</b>	<ul style="list-style-type: none"><li>• Toilets</li><li>• 10 trestle tables and 60+ chairs available for hire</li></ul> <p>Anyone wishing to hire the hall needs to have a current Certificate of Currency with a minimum of \$20,000,000 coverage and must complete a Community User Agreement</p>
<b>Website</b>	<a href="http://www.milperra-p.schools.nsw.gov.au">www.milperra-p.schools.nsw.gov.au</a>

# MORTDALE

## Mortdale Village Hall

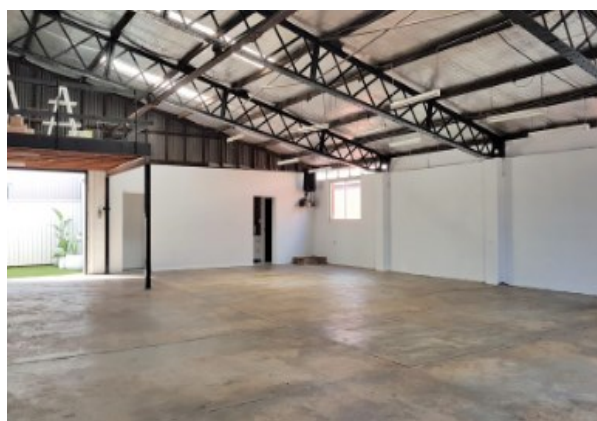
113 Victoria Avenue, Mortdale



<b>Capacity</b>	Seated 30 people
<b>Availability</b>	Available Saturday from 2pm and Sunday Available school holidays
<b>Cost</b>	Price on application
<b>Contact</b>	<a href="https://www.mortdalevillagehall.com/make-an-enquiry">https://www.mortdalevillagehall.com/make-an-enquiry</a> <a href="https://www.mortdalevillagehall.com/">https://www.mortdalevillagehall.com/</a>
<b>Facilities</b>	<ul style="list-style-type: none"> <li>• Tables and chairs</li> <li>• Toilets</li> <li>• Kitchen</li> <li>• Fenced in grass area</li> </ul>

## Party Splendour Creative Space Mortdale

72 Anderson Road, Mortdale



<b>Capacity</b>	Up to 120 people
<b>Availability</b>	Available Saturday 7am-5pm, Saturday night 5:30pm - 11:30pm Sunday 8am-6pm
<b>Cost</b>	Half day rate (5 hours) – \$650 Full day rate (9 hours) – \$950 Extra Hourly rate – \$100 Saturday night rate – \$1500 (including a security guard)
<b>Contact</b>	9534 8045 E: <a href="mailto:info@partysplendour.com.au">info@partysplendour.com.au</a>
<b>Facilities</b>	<ul style="list-style-type: none"> <li>• Air Conditioning</li> <li>• Wi-Fi &amp; Bluetooth</li> <li>• Kitchen with refrigeration facilities</li> <li>• 38sqm private turf courtyard</li> <li>• Tables and chairs</li> </ul>



# MORTDALE

## Mortdale Jubilee Community Centre

2b Boundary Road, Mortdale



<b>Capacity</b>	150 people
<b>Availability</b>	Monday to Friday: 7am - midnight Saturday: 9.00am - midnight Sunday: 9.00am - 10.00pm
<b>Cost</b>	<u>Casual Bookings</u> Monday to Friday: \$70/hour Weekends & Public Holidays: \$76/hour  <u>Regular Bookings</u> Monday to Friday: \$56/hour  No regular Friday or weekend bookings
<b>Contact</b>	Georges River Council: 9330 6400 or <a href="mailto:entertainment@georgesriver.nsw.gov.au">entertainment@georgesriver.nsw.gov.au</a>
<b>Facilities</b>	<ul style="list-style-type: none"> <li>• Kitchen</li> <li>• Toilets</li> <li>• Air conditioning</li> <li>• AV facilities and data projector</li> <li>• 20 x tables and x 150 chairs</li> <li>• Covered outdoor space</li> </ul>
<b>Website</b>	<a href="http://www.georgesriver.nsw.gov.au">www.georgesriver.nsw.gov.au</a>



# MORTDALE

## Mortdale RSL Club

*25 Macquarie Place, Mortdale*



<b>Capacity</b>	10-220 people
<b>Availability</b>	Please contact for availability
<b>Cost</b>	Price on application
<b>Contact</b>	9580 3649 tonyl@mortdalersl.com.au
<b>Facilities</b>	<ul style="list-style-type: none"><li>• Tables and chairs</li><li>• Toilets</li><li>• Catering available</li></ul>

# OATLEY

## 2nd Mortdale Scout Hall

6 Gungah Bay Road, Oatley



<b>Capacity</b>	10-220 guests
<b>Availability</b>	Sundays only
<b>Cost</b>	\$30/ hour min 4 hour hire
<b>Contact</b>	0404 019 015
<b>Facilities</b>	<ul style="list-style-type: none"> <li>• Tables and chairs</li> <li>• Toilets</li> </ul>

## Oatley Community Hall

61 Oatley Avenue, Oatley



<b>Capacity</b>	Seated, 50 people
<b>Availability</b>	Monday to Sunday: 8:00am - 10:30pm
<b>Cost</b>	<u>Casual Bookings</u> Monday to Friday: \$40/hour Weekends and Public Holidays: \$46.50/hour <u>Regular Bookings</u> Monday to Friday: \$34.00/hour No regular Friday night or weekend bookings
<b>Contact</b>	Georges River Council: 9330 6400 or <a href="mailto:entertainment@georgesriver.nsw.gov.au">entertainment@georgesriver.nsw.gov.au</a>
<b>Facilities</b>	<ul style="list-style-type: none"> <li>• Toilets</li> <li>• Kitchen with cooking and refrigeration facilities</li> <li>• 10 x trestle tables and 50 x chairs</li> </ul>

# PADSTOW

## Padstow Bowling Club 109 Iberia Street, Padstow



<b>Capacity</b>	Various spaces available: meeting rooms, large function area for events, fundraisers etc.
<b>Availability</b>	Monday, Tuesday, Wednesday, Saturday and Sunday
<b>Cost</b>	Price on application
<b>Contact</b>	Kelly (Functions Manager) 9773 8917
<b>Facilities</b>	<ul style="list-style-type: none"> <li>• Catering available / tables and chairs</li> <li>• Bowling green</li> <li>• Wheelchair access</li> <li>• Indoor spaces and outdoor covered spaces available (Dancefloor available)</li> </ul>

## Padstow Park Public School

*Segers Avenue Padstow*



<b>Capacity</b>	400 people
<b>Availability</b>	Weekdays after 6pm Not available Saturday Available Sunday
<b>Cost</b>	\$35/hour
<b>Contact</b>	9773 9258
<b>Facilities</b>	<ul style="list-style-type: none"> <li>• Toilets</li> <li>• PA System</li> <li>• Kitchenette</li> <li>• Presentation facilities - can be used upon application</li> </ul>

## Padstow RSL Club

*24-28 Howard Road, Padstow*



<b>Capacity</b>	40-200 various spaces available
<b>Availability</b>	Please contact for details
<b>Cost</b>	Upon request
<b>Contact</b>	9773 0528
<b>Facilities</b>	<ul style="list-style-type: none"> <li>• Toilets</li> <li>• PA System</li> <li>• Catering available</li> </ul>



# PADSTOW

## Padstow Senior Citizens' Centre

109 Iberia Street, Padstow



<b>Capacity</b>	Seated, 70 people
<b>Availability</b>	Sunday to Thursday: 8:00am - 10:00pm Friday & Saturday: 8:00am - midnight
<b>Cost</b>	<p><u>Casual Bookings</u></p> <p>Weekday: \$47.50/hour</p> <p>Weekend: \$62.00/hour</p> <p><u>Permanent Bookings (12 plus/annum)</u></p> <p>Weekday: \$27.50/hour</p> <p>Weekend: \$54.00/hour</p> <p>Block rates: \$310 for a block of 9am - 4pm or 5pm – midnight (Please note that the 5pm -midnight rate is only for Friday and Saturday)</p> <p>Bond: \$1000</p> <p>Not-for-profit and incorporated organisations are encouraged to enquire about discounted rates.</p>
<b>Contact</b>	City of Canterbury Bankstown: 9707 5770 or hallbookings@cbc.city.nsw.gov.au
<b>Facilities</b>	<ul style="list-style-type: none"> <li>• Small stage</li> <li>• Air conditioning</li> <li>• Kitchen with refrigeration facilities</li> <li>• Accessible toilets</li> <li>• 25 x tables and 75 x chairs</li> <li>• Disabled access</li> </ul>
<b>Website</b>	www.cbc.city.nsw.gov.au

# PANANIA

## Panania Anglican Church Hall

4-6 Lambeth Street, Panania



<b>Capacity</b>	Main Hall– 100 North Hall– 12m x 7m Meeting Room– 4m x5m
<b>Availability</b>	Upon request
<b>Cost</b>	<u>Casual Bookings</u> Main Hall- \$100/hr North Hall- \$80/hr Meeting Room- \$50/hr <u>Regular Bookings</u> Main Hall- \$85/hr North Hall- \$65/hr Meeting Room- \$40/hr
<b>Contact</b>	0408 342 634
<b>Facilities</b>	<ul style="list-style-type: none"> <li>• Air conditioning</li> <li>• Kitchenette</li> <li>• Accessible toilets</li> </ul>
<b>Website</b>	<a href="http://www.pananiaanglican.com.au/building-hire">www.pananiaanglican.com.au/building-hire</a>



# PANANIA

## 2nd Panania Scout Hall 21 Wilson Street, Panania



<b>Capacity</b>	50 people
<b>Availability</b>	Upon request No alcohol or smoking
<b>Cost</b>	One off bookings: \$50/hour 5 hour minimum block
<b>Contact</b>	9570 4525
<b>Facilities</b>	<ul style="list-style-type: none"> <li>Chairs and tables</li> <li>Toilets</li> <li>Kitchen</li> </ul>

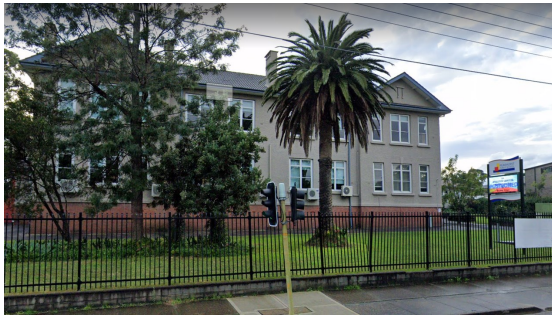
## Panania Senior Citizens' Centre 77 Anderson Avenue, Panania



<b>Capacity</b>	70 people
<b>Availability</b>	Sunday to Thursday 8:00am - 10:00pm Friday & Saturday 8:00am - midnight
<b>Cost</b>	<p><u>Casual Bookings</u></p> <p>Weekday: \$47.50/hour Weekend: \$62.00/hour</p> <p><u>Permanent Bookings (12 plus/annum)</u></p> <p>Weekday: \$27.50/hour Weekend: \$54.00/hour</p> <p>Block rates: \$310 for a block of 9:00am - 4:00pm or 5:00pm -midnight (Please note that the 5:00pm - midnight rate is only for Friday and Saturday)</p> <p>Bond: \$1000</p> <p>Not-for-profit and incorporated organisations are encouraged to enquire about discounted rates.</p>
<b>Contact</b>	City of Canterbury Bankstown: 9707 5770 or hallbookings@cbc.city.nsw.gov.au
<b>Facilities</b>	<ul style="list-style-type: none"> <li>Kitchen with refrigeration facilities/ Toilets</li> <li>Air-conditioning</li> <li>20 x tables and 70 x chairs</li> <li>Disabled access</li> </ul>
<b>Website</b>	www.cbc.city.nsw.gov.au

# PEAKHURST

## Peakhurst Public School 65A Bonds Road, Peakhurst



<b>Capacity</b>	400 people
<b>Availability</b>	Weekends
<b>Cost</b>	Upon request
<b>Contact</b>	9153 9157
<b>Facilities</b>	<ul style="list-style-type: none"> <li>• Toilets</li> <li>• PA system</li> </ul>

## Peakhurst South Public School Hall 45A Pindari Road, Peakhurst



<b>Capacity</b>	Seated, 100 people
<b>Availability</b>	<p>Available Tuesday and Wednesday after 6:30pm</p> <p>One off bookings accepted, regular bookings preferred</p> <p><i>Subject to change</i></p>
<b>Cost</b>	Price on application
<b>Contact</b>	9153 7256
<b>Facilities</b>	<ul style="list-style-type: none"> <li>• Toilets</li> <li>• Wheelchair access and toilets</li> <li>• Stage</li> <li>• Covered outside area</li> </ul>

# PENSHURST

## **Penshurst Anglican Church Hall** *2 Carrington Street, Penshurst*



<b>Capacity</b>	Seated, 100 people
<b>Availability</b>	Monday to Wednesday Thursday, Friday, Saturday (PM only)
<b>Cost</b>	Minimum hire of 2 hours at \$60/hour, then \$30 /hour thereafter  Security bond of \$400 required
<b>Contact</b>	Naomi: 0417 285 200 or churchrental@penshurstanglican.org
<b>Facilities</b>	<ul style="list-style-type: none"><li>• PA system</li><li>• Toilet</li><li>• Kitchen</li><li>• Wheelchair access</li></ul>
<b>Website</b>	<a href="http://www.penshurstanglican.org/hall-rental">www.penshurstanglican.org/hall-rental</a>



# PICNIC POINT

**Picnic Point Scout Hall**  
*23 Carinya Road, Picnic Point*



<b>Capacity</b>	Seated, 100 people
<b>Availability</b>	Upon request
<b>Cost</b>	<p>\$30/hour + GST</p> <p>Minimum hire of 2 hours</p> <p>Public liability insurance required for organisations</p>
<b>Contact</b>	9570 4525
<b>Facilities</b>	<ul style="list-style-type: none"><li>• Kitchen with refrigeration facilities</li><li>• Toilets</li><li>• Tables</li></ul>

# PUNCHBOWL

## Punchbowl Community Centre

44 Rossmore Street, Punchbowl



<b>Capacity</b>	100 people
<b>Availability</b>	Upon request
<b>Cost</b>	<p><b>Hall– 100 people</b></p> <p>Weekday Fee- \$55.00 /hour</p> <p>Weekend Fee \$75.00/ hour</p> <p>Weekend 8 hour block \$500</p> <p>Kitchen Charge- (with hire of hall– one off charge of \$60 for event)</p> <p><b>Meeting Rooms– up to 40 people</b></p> <p>Weekday Fee \$38.50/ hour</p> <p>Weekend Fee \$55.00/ hour</p> <p>Bond \$500</p>
<b>Contact</b>	<p>9533 0100</p> <p>E:reception@riverwoodcommunity.org.au</p>
<b>Facilities</b>	<ul style="list-style-type: none"> <li>• Kitchen with refrigeration facilities</li> <li>• Toilets</li> <li>• Tables</li> </ul>

## Moxon Sports Club

61 Moxon Road, Punchbowl



<b>Capacity</b>	100 people
<b>Availability</b>	Upon request
<b>Cost</b>	Price on application
<b>Contact</b>	9704 7799
<b>Facilities</b>	<ul style="list-style-type: none"> <li>• Catering available</li> <li>• Tables</li> <li>• Wheelchair access</li> </ul>

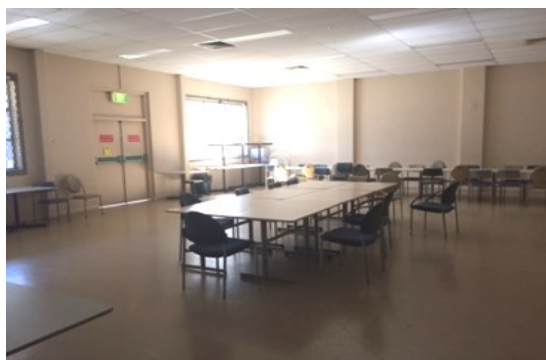
# REVESBY

## Revesby Greens 1 Spence Street, Revesby



<b>Capacity</b>	Seated, 30 people
<b>Availability</b>	Upon request
<b>Cost</b>	Price on application
<b>Contact</b>	9773 6752
<b>Facilities</b>	<ul style="list-style-type: none"> <li>• Toilets</li> <li>• Kitchen</li> <li>• Wheelchair access</li> <li>• Bowling green</li> </ul>

## Revesby Workers Club Community Hall (MacArthur Room) 22 Revesby Place, Revesby



<b>Capacity</b>	Seated, 50 people
<b>Availability</b>	Monday to Sunday 8:00am -10:00pm
<b>Cost</b>	Price on application
<b>Contact</b>	9772 2100 or functions@rwc.org.au
<b>Facilities</b>	<ul style="list-style-type: none"> <li>• Kitchen with refrigeration facilities</li> <li>• Toilets</li> <li>• Tables</li> </ul>

## YMCA Revesby 184 The River Road, Revesby



<b>Capacity</b>	4 rooms for hire with varying capacities
<b>Availability</b>	Upon application
<b>Cost</b>	\$50/hour
<b>Contact</b>	9771 6033 or admin.bankstown@ymcansw.org.au
<b>Facilities</b>	<ul style="list-style-type: none"> <li>• Kitchenette</li> <li>• Toilets</li> <li>• Tables</li> </ul>



# REVESBY

## Endeavour Hall

89 The River Road, Revesby



<b>Capacity</b>	Seated, 100 people
<b>Availability</b>	Sunday to Thursday: 8:00am - 10:00pm Friday & Saturday: 8:00am - midnight
<b>Cost</b>	<u>Casual Bookings</u> Weekday: \$47.50/hour Weekend: \$62.00/hour <u>Permanent Bookings (12 plus/annum)</u> Weekday: \$27.50/hour Weekend: \$54.00/hour Block rates: \$310 for a block of 9am - 4pm or 5pm - midnight (Please note that the 5pm - midnight rate is only for Friday and Saturday) Bond: \$1000
<b>Contact</b>	City of Canterbury Bankstown: 9707 5770 or hallbookings@cbc-city.nsw.gov.au
<b>Facilities</b>	<ul style="list-style-type: none"> <li>• Stage</li> <li>• Kitchen with refrigeration &amp; stove facilities</li> <li>• Accessible toilets</li> <li>• 25 x tables and 100 x chairs</li> <li>• Air conditioning</li> </ul>
<b>Website</b>	www.cbc-city.nsw.gov.au

## Sir Joseph Banks High School

Turvey Street, Revesby



<b>Capacity</b>	600 people
<b>Availability</b>	Available Monday to Friday afternoons Not available Saturday or Sunday during school term
<b>Cost</b>	\$50/hour + GST
<b>Contact</b>	9773 6054
<b>Facilities</b>	<ul style="list-style-type: none"> <li>• Toilets</li> <li>• PA System/Stage</li> <li>• Breakaway rooms</li> <li>• Wheelchair access to the stage</li> </ul>

# REVESBY

## Revesby Community Centre 1a MacArthur Avenue, Revesby



<b>Capacity</b>	Seated, 120 people
<b>Availability</b>	Sunday to Thursday: 8:00am -10:00pm Friday & Saturday: 8:00am - midnight
<b>Cost</b>	<p><u>Casual Bookings</u></p> <p>Weekday: \$58.00/hour</p> <p>Weekend: \$90.00/hour</p> <p><u>Permanent Bookings (12 plus/annum)</u></p> <p>Weekday: \$38.00/hour</p> <p>Weekend: \$68.00/hour</p> <p>Block rates: \$450 for a block of 9am - 4pm or 5pm–midnight (Please note that the 5pm - midnight rate is only for Friday and Saturday)</p> <p>Bond: \$1000</p> <p>Not-for-profit and incorporated organisations are encouraged to enquire about discounted rates.</p>
<b>Contact</b>	City of Canterbury Bankstown: 9707 5770 or hallbookings@cbc.city.nsw.gov.au
<b>Facilities</b>	<ul style="list-style-type: none"> <li>• Stage</li> <li>• Toilets</li> <li>• Kitchen with refrigeration &amp; oven facilities</li> <li>• 26 x tables and 120 x chairs</li> <li>• PA system</li> </ul>
<b>Website</b>	www.cbc.city.nsw.gov.au

# RIVERWOOD

## Hannans Road Public School

32 Hannas Road, Riverwood



<b>Capacity</b>	100-150 people It is best to view before booking
<b>Availability</b>	Upon application
<b>Cost</b>	Price on application
<b>Contact</b>	9153 8170
<b>Facilities</b>	<ul style="list-style-type: none"> <li>• Stage</li> <li>• Toilets</li> <li>• Adjacent smaller rooms</li> </ul>

## Riverwood Public School

Union Street, Riverwood



<b>Capacity</b>	100 people
<b>Availability</b>	Upon application
<b>Cost</b>	Around \$35/hour
<b>Contact</b>	9153 8757
<b>Facilities</b>	<ul style="list-style-type: none"> <li>• Stage</li> <li>• Toilets</li> </ul>

## Thurlow Street Community Hub

31 Thurlow Street,, Riverwood



<b>Capacity</b>	40 people
<b>Availability</b>	Upon request
<b>Cost</b>	Weekday: \$38.50/hour Weekend: \$55/hour Bond \$500
<b>Contact</b>	9533 0100
<b>Facilities</b>	Used for meetings and the conduct of community programs
<b>Website</b>	<a href="http://www.riverwoodcommunity.org.au/venues-for-hire/">www.riverwoodcommunity.org.au/venues-for-hire/</a>

# RIVERWOOD

## Riverwood Community Centre 151 Belmore Road, Riverwood



<b>Capacity</b>	Seated, 30 people (Meeting Rooms) Seated, 140 people (Hall)
<b>Availability</b>	9:00am - 5:00pm Monday to Friday
<b>Cost</b>	<u>Hall</u> Weekday 9:00am - 5:00pm: \$20/hour Weekday from 5:00pm: \$35/hour Weekend: \$75/hour Weekend 8 hour block: \$500 Bond \$500 <u>Meeting Rooms</u> Weekday 9:00am - 5:00pm: \$20/hour Weekday from 5:00pm: \$35/hour Weekend: \$55/hour Bond \$500
<b>Contact</b>	9533 0100
<b>Facilities</b>	<ul style="list-style-type: none"> <li>• Kitchen with refrigeration facilities</li> <li>• Toilets</li> <li>• Tables and Chairs</li> </ul>
<b>Website</b>	<a href="http://www.riverwoodcommunity.org.au/venues-for-hire/">www.riverwoodcommunity.org.au/venues-for-hire/</a>



# RIVERWOOD

## Riverwood Community Hub 80 Kentucky Road, Riverwood



<b>Capacity</b>	Multiple different sized rooms available
<b>Availability</b>	Sunday to Thursday 9:00am - 10:00pm Friday & Saturday from 9:00am - midnight
<b>Cost</b>	<u>Casual Bookings</u> Weekday: \$58.00/hour Weekend: \$90/hour <u>Permanent Bookings (12 plus/annum)</u> Weekday: \$38.00/hour Weekend: \$68.00/hour Block rates: \$450 for a block of 9am - 4pm or 5pm - midnight (Please note that the 5pm - midnight rate is only for Friday and Saturday) Bond: \$1000 Not-for-profit and incorporated organisations are encouraged to enquire about discounted rates.
<b>Contact</b>	9707 5770
<b>Facilities</b>	<ul style="list-style-type: none"><li>• Air conditioning</li><li>• Kitchen with a stove, microwave and fridge</li><li>• Wi-Fi access</li><li>• Disable access to facilities and toilets</li></ul>
<b>Website</b>	<a href="http://www.cbcity.nsw.gov.au">www.cbcity.nsw.gov.au</a>

# RIVERWOOD

## Morris Iemma Sports Centre– Multipurpose Room 150 Belmore Road, Riverwood



<b>Capacity</b>	Multi-Purpose Room A & B
<b>Availability</b>	<u>Off Peak</u> Monday to Friday: 9:00am - 4:00pm <u>Peak</u> Monday to Friday: 4:00pm - 10:00pm Saturday & Sunday: All Day
<b>Cost</b>	<u>Multi-Purpose Room A1&amp;A2 (Regular Hire)</u> \$68/hour peak, \$45/hr off peak (Private), \$47/hour peak, \$35/hr off peak (Community) <u>Multi-Purpose Room A1 &amp;A2 (Casual)</u> \$85/hour peak, \$62 per hour off peak (Private), \$47/hour peak, \$35/hour off peak (Community) <u>Multi-Purpose Room B (Regular Hire)</u> \$49.50/hour (Private), \$21.50/hour (Community) <u>Multi-Purpose Room B (Casual)</u> \$60/hour (Private), \$38.50/hour (Community).  <i>(Bond of \$200 may be applicable)</i>
<b>Contact</b>	9153 0441 or <a href="mailto:bookings.miisc@cbc.city.nsw.gov.au">bookings.miisc@cbc.city.nsw.gov.au</a>
<b>Facilities</b>	<ul style="list-style-type: none"> <li>• Kitchenette</li> <li>• Accessible Toilets</li> <li>• tables and chairs</li> <li>• Sporting facilities</li> <li>• Air conditioning</li> </ul>
<b>Website</b>	<a href="http://www.cbc.city.nsw.gov.au/miisc/hire">www.cbc.city.nsw.gov.au/miisc/hire</a>

# SOUTH HURSTVILLE

## St Mark's Church Hall 8/10 The Mall, South Hurstville



<b>Capacity</b>	Auditorium arrangement: 100 Sit-down dinner: 100
<b>Availability</b>	During day and evenings (except Sundays) Subject to permanent bookings
<b>Cost</b>	Price on application
<b>Contact</b>	office: 9546 1239 or <a href="mailto:office@stmarkssouthhurstville.org.au">office@stmarkssouthhurstville.org.au</a>
<b>Facilities</b>	<ul style="list-style-type: none"><li>• Fully equipped kitchen</li><li>• Crockery / cutlery</li><li>• Tables / chairs</li><li>• Stage, PA system and TV</li><li>• Air-conditioning and fans</li><li>• Disabled access into hall and toilets</li></ul>



**David Coleman MP**  
*Federal Member for Banks*

**Community Hall Guide**  
**2024**